

---

# LLYNNOEDD HENDRE CAERDYDD CARDIFF HENDRE LAKES

---

Gwasanaethir gan Parcffordd Caerdydd  
Served by Cardiff Parkway

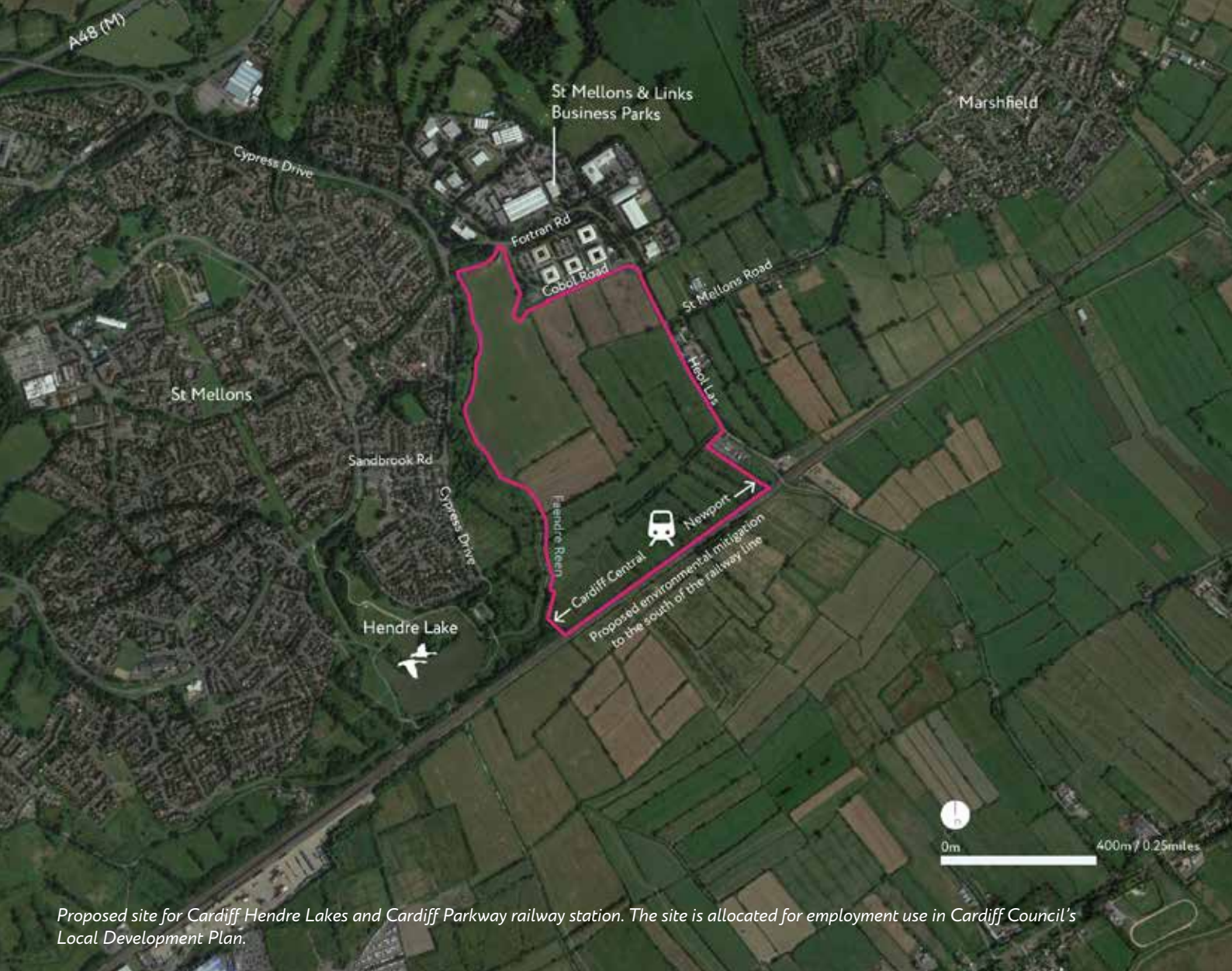


## Have your say

Cardiff Hendre Lakes and Cardiff Parkway public engagement booklet

20 November - 18 December 2019





## Cardiff Hendre Lakes served by: Cardiff Parkway railway station

We are developing plans for Cardiff Hendre Lakes - a proposed new business district to the south of St Mellons Business Park which will be served by the new Cardiff Parkway station.

The development, which will be subject to an outline planning application, will bring a range of benefits for the local area and wider region, including jobs, investment and better transport links.

As we continue to develop our proposals, we want to hear your thoughts about the project. We are carrying out four weeks of public engagement where you can share your views and help us to shape our proposals.

**This booklet contains information to help you provide feedback.**

**To share your views, please complete a comment card online or send it to FREEPOST HENDRE LAKES by Wednesday 18 December.**



*One of the reens found on the site for Cardiff Hendre Lakes, looking up towards the existing St Mellons Business Park.*

## About the site

The site for Cardiff Hendre Lakes and Cardiff Parkway is located to the south of St Mellons Business Park. The Great Western main line is at the south of the site, with Heol Las and Marshfield to the east, and Cypress Drive and St Mellons to the north and west.

Cardiff Council has allocated the site for employment use in its Local Development Plan. Around 5,000 new jobs could be accommodated if the scheme is fully developed.

The site also borders Hendre Lake Park, from which the development takes its name. This opens up a number of opportunities, both for green space and for improving connections to St Mellons and Trowbridge (please see page 7 for more information).

There are a number of factors affecting how the site could be developed, including constraints such as electricity pylons, a high-pressure gas facility to the east of the site, and its location within the Gwent Levels, a network of fields and drainage ditches (or reens), which were reclaimed from the sea during Roman times. We will retain some of the natural characteristics of the site and are aiming to enhance the environment wherever possible, ultimately helping people enjoy the heritage and beauty of the landscape. As the site is a Site of Special Scientific Interest, we are working with key stakeholders, such as Natural Resources Wales, to ensure that we meet this objective.

## Transport and travel

Currently, people in St Mellons and Trowbridge are restricted in the way they can travel around the local area and wider region. Routes into Cardiff city centre are often congested, with the nearest regional railway station located in Newport roughly seven miles away. Buses into Cardiff city centre take up to 65 minutes. A new railway station with frequent services will result in a dramatic reduction in journey times via public transport to the centres of Cardiff, Newport, Ebbw Vale and beyond.

## Cardiff Parkway station – connecting people, the region and the economy

Cardiff Parkway is a new railway station proposed within the Hendre Lakes development and is expected to welcome more than 800,000 passengers a year.

Situated just seven minutes from Cardiff Central and Newport South Wales, the new railway station promises to drastically cut journey times to both cities, as well as improve connectivity to other areas of the country and the wider UK. The new station will also form part of the South Wales Metro.

Neighbouring communities will be connected to the development and the railway station by new cycle paths and walking routes. For those coming from further afield, bus facilities will make it easier for local services to call at the station. There will also be parking and drop-off facilities for those coming by car.

By providing better public transport and a new station with parking, we plan to make it as convenient as possible for people to park their cars and switch to a train. We hope that it will also help ease congestion when major events are taking place in central Cardiff, such as rugby matches.

Although the project is at an early stage, Cardiff Parkway will bring a range of long-term benefits to the local area and wider region, including:



**Economic investment:**  
Bringing new businesses and investment into South Wales



**Improved access:**  
Allowing people to access new job opportunities both on site and elsewhere



**Better connectivity:**  
Connecting people to other areas of Wales and the UK



**Active travel:**  
Encouraging people throughout South Wales to use healthier and more sustainable forms of transport





Artist's impression of the station interior.

Station open in  
**2023\***

More than  
**800,000**  
passengers a year

**600**   
spaces for station parking initially

Journeys of

**7**



minutes to **Cardiff**  
**Central and Newport**  
**South Wales**

**4** platforms

serving local routes and  
mainline journeys to other parts  
of the UK, including **London,**  
**North Wales, Manchester, Bristol**  
**and South West England**

**8**  
trains



an hour to **Cardiff**  
and **Newport**

\* Subject to planning permission and construction timescales.



Site plan which indicates some of the key features of the proposed Hendre Lakes development.

- Vehicle access
- - - Walking and cycling routes
- Reen network
- — — Proposed green corridor for environmental mitigation

# About Hendre Lakes

Set at the heart of the Cardiff Capital Region, Cardiff Hendre Lakes will be a vibrant business district, providing high quality facilities such as business spaces, cafes and restaurants around the railway station, and all within an exceptional natural landscape.

This area is allocated for 90,000 sqm of employment space within Cardiff Council's Local Development Plan, and will support around 5,000 jobs in a variety of industries.

Our aim is for the development to become a catalyst for growth, contributing to the regeneration of East Cardiff, and the wider Cardiff Capital Region, by attracting investment into quality, enduring businesses. We want to attract world class employers from the UK and abroad, as well as supporting emerging start-ups and future technologies.

Cardiff Hendre Lakes will be a truly sustainable development, connecting existing communities to the station and encouraging a sense of place. We want to create an environment that is an attractive, well-designed place for people to work, visit and socialise. Key features will include:



Cafes, restaurants and other facilities for people using the station, working at Cardiff Hendre Lakes or the existing, adjacent business parks, and the local community



Walking and cycling routes through the development, providing sustainable connections from communities in St Mellons to the station



Celebrating the green network running through the site and incorporating it into attractive landscaping features with public seating and walkways, while simultaneously respecting its ecological importance



Connecting and expanding Hendre Lake Park



Safe cycle storage and electric vehicle charging points accessible to the public and to support electrified public transport

Cardiff Hendre Lakes aims to put sustainable modes of travel first, making it easier and more convenient for people to leave their cars at home and travel by train, bus or bike.



## Sharing your thoughts

We would like to thank you for your time and encourage you to get involved by providing your feedback on the project. You can do this by completing one of our comment cards.

With your support, we can create a truly unique development that brings investment to the region, creates new employment opportunities, and connects people to a historic landscape.

To have your say, please complete a comment card by:



completing it at a meet the team event



emailing it to **communityrelations@cardiffhendrelakes.com**



posting it to FREEPOST HENDRE LAKES (you do not need a stamp)



completing it on our website: **www.cardiffhendrelakes.com**

We will consider your responses and, where possible, include them as we continue to work on our designs for the scheme. We will hold a formal, statutory consultation before we submit an outline planning application next year.

If you would like more information, please get in touch:

☎ 0800 464 0850

✉ communityrelations@cardiffhendrelakes.com

✉ FREEPOST HENDRE LAKES

🏠 [www.cardiffhendrelakes.com](http://www.cardiffhendrelakes.com)

## Stay informed about Cardiff Hendre Lakes

We'll be adding more information to our website about the development in the coming weeks and months. To make sure you stay up to date, sign up to our mailing list via our website or follow us on social media:

🐦 @HendreLakes

📘 Cardiff Hendre Lakes